



STÓ:LŌ XWEXWÍLMEXW TREATY ASSOCIATION

# STÓ:LŌ ART SELF-GUIDED TOUR

Please enjoy this self-guided tour, in the spirit of connecting our Stó:lō communities. Even in this time of social isolation, we can explore our communities and appreciate the different works of Stó:lō art that are available for all to see. We would love to encourage you to do more research into the art and artists online or by talking to people in your communities! Please share anything you find with us too.

## **#ShareStolo**

Post your selfies or pics of these places with the **#ShareStolo** hashtag and we will feature them on our Stó:lō Xwexwílmexw Facebook page.

---

HOPE  
CHILLIWACK  
ABBOTSFORD  
MISSION

---

# Hope

## 1. Syéxw Chó:leq̓w Adventure Park

*59389 LOUGHEED HWY, BETWEEN AGASSIZ AND HOPE, BC*

---

Opened in September 2018, the park is located on the traditional land and territory of Sq'ewá:lxw First Nation. The name was chosen due to the scree slope at the north end of the Park where large rocks have been falling from the mountain for thousands of years. The Park includes 4,000 metres of walking and cycling trails, a bike skills park, viewing platforms, a 90,000 square foot playground, as well as other supporting facilities. Visitors can also enjoy the many art installations throughout the park in the form of mural paintings and wood sculptures. There are several carvings in the park, see if you can spot them all!





# Chilliwack

## 2. Welcome Figures by Terry Horne

*CHILLIWACK VISITOR CENTRE,  
44150 LUCKAKUCK WAY, CHILLIWACK*

---

Two 18-foot tall cedar welcome figures, a male and female, carved by Artist and Chief of Yeqwyeqwi:ws Terry Horne were installed in 2017.



## 3. Welcome Poles by Terry Horne; Outdoor art by Stan Greene, Fred Jackson and Wayne Williams

*TZEACHTEN VEDDER CROSSING MALL, VEDDER AND PROMONTORY ROAD*

---



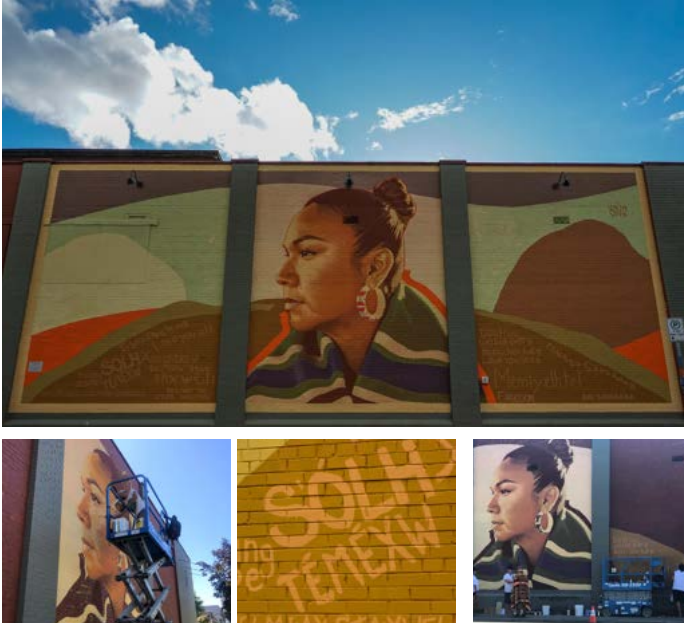
These pieces of Stó:lō art were added to the Ch'iyáqtel Nation-owned shopping centre in 2015. You'll find the two poles pictured at the Save-On-Foods entrance and various paintings hung up in between plaza businesses.

# Chilliwack

## 4. "Use Your Voice", Mural Art featuring Inez Louis (Point) by Kevin Ledo

*MILL STREET AND VICTORIA AVE,  
CHILLIWACK (ACROSS ST FROM PARTY IN THE PARK)*

---



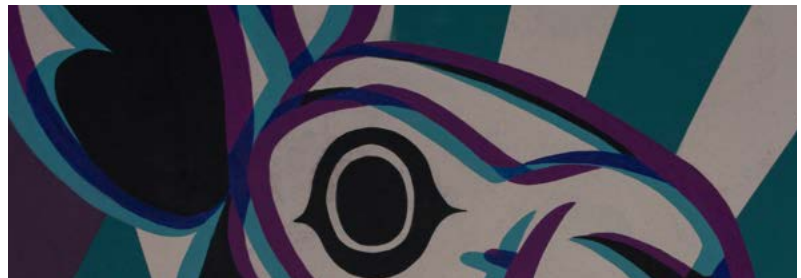
A larger-than-life portrait of local Indigenous musician, community leader, public nurse, and role model Inez Louis. Kevin Ledo is a Montreal-based mural artist. Indigenous community members filled in the piece, with positive messages in Halq'eméylem, Cree, Anishinaabemowin, and English.

## 5. RGB Bunny, Mural Art by Carrielynn Victor

*45921 WELLINGTON AVENUE, CHILLIWACK*

---

*"I wanted to give Chilliwack a one of a kind piece, with RGB colour concept in play along with the elements I use and love. The Rabbit was inspired by the bunny who made our yard home for itself this summer" - Carrielynn Victor, Artist Facebook Page*





# Chilliwack

## 6. 'United' Canoe and Paddle Sculpture

*VEDDER RIVER BRIDGE ROUNDABOUT, VEDDER ROAD, CHILLIWACK*

The sculpture, which honours sacred salmon and local waters, was designed co-operatively by Squiala First Nation Chief David Jimmie and Coast Salish artist Bonny Graham, in consultation with the Stó:lō Nation Chiefs Council and Ts'elxwéyeqw Tribe. The work was completed by State of the Art Concepts in the Cowichan Valley, owned by Challen Clark.



## 7. Vedder Bridge Mural by Trenton Pierre

*RETAINING WALL AND UNDER BRIDGE AT VEDDER ROAD AT THE CHILLIWACK RIVER*

Check out the 90-foot long mural featuring the first eulachon and a large sturgeon in the surrounding waters of the lower mainland. The Katzie First Nation artist saw two deer in front of the bridge while scoping out his blank canvas, so they were incorporated into the painting walking along the sturgeons back. Under the bridge, discover the greatness of the Earth and pose in front of the person with their arms spread out.



# Chilliwack

## 8. Our Living Languages and Contours: The Shape of Our City within S'ólh Téméxw, Various artists

*CHILLIWACK MUSEUM, 45820 SPADINA AVENUE*

---

*Our Living Languages* is a travelling exhibition by the Royal British Columbia Museum that highlights what First Nations communities throughout the province are doing to help 34 different languages survive and flourish. It is on from January 16, 2021 to May 24, 2021



*Contours: The Shape of Our City* explores the impact maps and the processes associated with mapping had (and continue to have) on our daily lives living on and within S'ólh Téméxw (Our World). This exhibit is on from September 8, 2020 to April 24, 2021

## 9. Harvest, by Leslie Waddington and Central Elementary School Students

*MILL STREET AND VICTORIA AVE, CHILLIWACK*

---

Indigenous-style images in bright shades of turquoise, orange and red, bordered with local schoolchildren's handprints, as an artistic gesture of hope for the community.



# Chilliwack

## 10. Stó:lō Resource Centre Welcome Figures, by Dwayne Malloway, George Pennier, Rocky LaRock, Billy Baker

*BUILDING 10, STÓ:LŌ NATION COQWALEEZTA GROUNDS –  
7201 VEDDER ROAD, CHILLIWACK*

---

These large-scale carvings of a male and female, standing with hands raised and outstretched, greet visitors in our traditional Stó:lō way.



## 11. Stó:lō Resource Centre Ravens, by Rocky LaRock

*BUILDING 10, STÓ:LŌ NATION COQWALEEZTA GROUNDS*

---

Two ravens, a male and a female, look out from the inverted peak of Building 10. These ravens were included in the original Qoqolaxel longhouse and helped to deter raiders.





# Chilliwack

## 12. School Art, by Carrielynn Victor

Please enjoy viewing these colourful murals outside of school hours.

---



a. Strathcona Elementary School, 46375 Strathcona Rd, Chilliwack



b. Cheam Elementary School,  
9895 Banford Rd, Chilliwack



c. Sardis Elementary School,  
45775 Manuel Rd, Chilliwack



# Abbotsford

## 13. Semá:th Xo:tsa: Great Gramma's Lake by Carrielynn Victor, Cheam

*THE REACH GALLERY, 32388 VETERANS WAY, ABBOTSFORD, BC*

In 2020, a small collective put together by the Reach wrote a book remembering Semá:th Xo:tsa. They combed through oral history, museum archives, and sought community feedback to prepare a children's book focused on a place-based story that contains a "trip around the lake." Using archival photos and digital drawing, artist Carrielynn Victor imagined scenes of old village sites, historical moments and some fun imagery of a grandmother who is sharing sqwelqwel with her grandson to create the imagery that compliments the story. The exhibition runs until May 8, 2021.



## 14. The Wild Inside exhibit by E'yies'lek Rocky Larock

*THE REACH GALLERY, 32388 VETERANS WAY, ABBOTSFORD, BC*

---

This exhibition of work by Stó:lō master carver Claude “Rocky” LaRock is a long overdue acknowledgement of the 40-year career of this remarkable artist, whose practice is inseparable from his Stó:lō identity and his relationships to community, family, and land. LaRock has mastered the skills, techniques, and stories of traditional hand-carving, but he is equally committed to experimentation, incorporating contemporary elements and techniques, creating carvings intended solely for display, and using a unique visual language to express contemporary, global concerns through the lens of a Stó:lō cosmology. The exhibition runs until May 8, 2021.





# Abbotsford

## 15. Heron Sunrise Mural by Carrielynn Victor

*1640 RIVERSIDE ROAD, A MODULAR LOW-BARRIER HOUSING BUILDING, ABBOTSFORD*

---

Featuring the Great Blue Heron, who plays a key role in Shxwōxwiya:m (Stó:lō stories) that direct humans to what is considered “right behavior” in Coast Salish custom. In particular the heron stories tell us about patience, timing, gathering food, and migration. This mural was created in 2019.

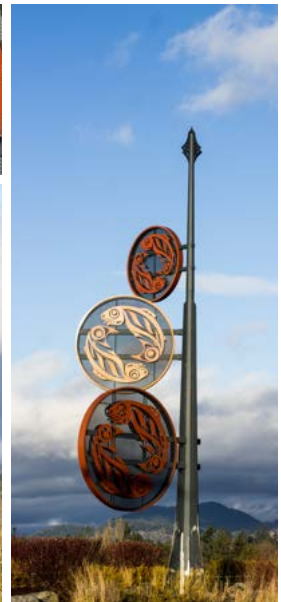


## 16. Life Cycle of a Salmon, by Raphael Silver

*MCCALLUM ROUNDABOUT, ABBOTSFORD*

---

This steel sculpture by Raphael Silver, a Sumas First Nation artist, was the first piece of public art commissioned by the City of Abbotsford. It represents the life of the salmon, the round shape represents the first stage of life as an egg. The two salmon inside the egg represent the continuous cycle, the salmon’s travel to the ocean and its return to the river. It is a symbol of the Stó:lō peoples’ reverence for the salmon, and an homage to mother nature to show thanks and appreciation for such a generous gift.



# Abbotsford

## 17. Hummingbird House Post, by Raphael Silver

*KARITON ART GALLERY, 2387 WARE STREET, ABBOTSFORD*

---

The post was carved in 2017 to acknowledge the Stó:lō in the community and depicts a hummingbird and flowers.



## 18. Spindlewhorl by Francis Horne Sr.; Outdoor Landscape and Salmon Mural by Fred Jackson and students.

*UFV ABBOTSFORD - 33844 KING RD*

---



A bronze cast of a carved spindlewhorl found inside building B101 was unveiled in 2017, along with the outdoor landscape mural by Fred Jackson. The salmon mural was created by Fred and UFV visual arts students in 2018.



# Mission

## 19. Various artists, Mission Community: Joined Together in Spirit

*MISSION VISITOR CENTER,  
34033 LOUGHEED HWY, MISSION*

---

The post was a project that begun in 2007 that included carvers, Johnny Williams (Sq'ewlets), George Pennier (Sts'ailes), Tom Patterson (Nuu-Chah-Nulth), Roxanne McCallum and Pascal Pelletier. Between consultation with each other on tradition, they collaborated on design and chose figures that would represent the relationship between the land and nature in the Fraser Valley #Sólhtéméxw



## 20. House Post Arch, by Raphael Silver

*FRASER RIVER HERITAGE PARK, MISSION*

---

Two 18-foot posts were carved as part of a healing process from the legacy of St. Mary's Residential School that once existed on this site. The poles depict salamanders, a dancer with a Sxwó:yxwey mask and salmon.



## 21. Rise, by Doug Carious and Mission youth

*FRASER RIVER HERITAGE PARK, MISSION*

---

Creative Works, a division of Mission Youth Unlimited received a grant to paint a mural depicting youth involved in different activities making the community a better place.



**STÓ:LŌ XWEXWILMEXW TREATY ASSOCIATION**

10-7201 VEDDER ROAD, CHILLIWACK BC V2R 4G5

TEL: (604) 824 3281

EMAIL: [OUTREACH@SXTA.BC.CA](mailto:OUTREACH@SXTA.BC.CA)

[WWW.SXTA.BC.CA](http://WWW.SXTA.BC.CA)

